

## Research Article

## Analyzing the Interconnection between Agricultural Economic Resilience Social Equity and Environmental Conservation in Sustainable Agribusiness Models

<sup>1</sup> Dheny Arina Hartawaty

<sup>1</sup>Universitas Nahdlatul Ulama Yogyakarta  
Corresponding Author, Email: [dheny@unu-jogja.ac.id](mailto:dheny@unu-jogja.ac.id)

### Abstract

This research explores the interconnection between agricultural economic resilience, social equity, and environmental conservation in sustainable agribusiness models. It examines how integrating these three factors can improve agricultural sustainability, particularly for smallholder farmers in developing countries, who are often vulnerable to economic shocks, social inequality, and environmental degradation. The study aims to develop a comprehensive framework that combines these elements to create more resilient, inclusive, and sustainable agribusiness models. The research employs a library-based methodology, utilizing secondary data from books, journal articles, case studies, and reports on sustainable agriculture, social equity, and economic resilience. The analysis reveals that integrating economic resilience strategies such as climate-smart agriculture, promoting social equity by ensuring access to resources for marginalized groups, and adopting environmentally sustainable practices significantly improves the productivity and sustainability of agricultural systems. Furthermore, the study highlights the need for policies that foster the interconnectedness of these factors, ensuring the creation of sustainable agribusinesses that benefit both farmers and the environment. The findings emphasize the importance of an integrated approach to achieve long-term sustainability in agriculture, offering valuable insights for policymakers, farmers, and agribusinesses.

**Keywords:** Agricultural Economic Resilience, Social Equity in Agribusiness,



## Environmental Conservation in Sustainable Agriculture.

### INTRODUCTION

Agriculture remains a cornerstone of economic stability in many developing countries, providing livelihoods for millions of people and contributing significantly to national GDP. However, the agricultural sector in these regions faces an array of pressing challenges that hinder its growth and long-term sustainability. These challenges are multifaceted and involve economic, social, and environmental issues that are increasingly difficult to address through traditional farming practices alone. Economic resilience within the agricultural sector is becoming more critical as it faces disruptions from global trade fluctuations, climate change, and market volatility. Smallholder farmers, who form the backbone of the agricultural industry in many developing countries, often struggle to adapt to these shocks due to limited resources, access to capital, and inadequate risk management tools. On the social front, there is an increasing divide between large commercial agribusinesses and smallholders, exacerbating inequality within agricultural communities. Furthermore, environmental degradation, driven by unsustainable farming practices, deforestation, and overuse of chemical inputs, is undermining the long-term productivity of agricultural lands. As the global population grows, the pressure on natural resources increases, making it more difficult to maintain productivity while ensuring the sustainability of agricultural ecosystems. This growing strain on both economic and natural resources demands the creation of new, sustainable agribusiness models that can foster economic resilience, promote social equity, and protect the environment for future generations. The need to create a more equitable, resilient, and environmentally responsible agricultural sector is more urgent than ever (Kusumawati et al., 2025).

A review of the existing literature reveals that while there is significant research on individual aspects of sustainability within agriculture, such as economic resilience, environmental conservation, and social equity, there is a gap in comprehensive studies that integrate these three critical areas. Economic resilience in agriculture is often defined as the ability of farming systems to withstand and recover from economic shocks, such as price volatility, crop failures, and market disruptions. However, much of the research in this area focuses on broad, macroeconomic factors like trade policy and global supply chains, often overlooking the specific needs and challenges faced by smallholder farmers. Moreover, while there is an increasing body of research focused on environmental conservation practices, such as sustainable land management and agroecology, these studies tend to emphasize technical solutions without addressing the broader economic and social systems in which these practices are implemented. In particular, these studies often fail to integrate social equity into the equation, neglecting the ways in which inequalities within agricultural communities limit the effectiveness of conservation efforts. Theories of sustainable development in agriculture frequently focus on economic viability and environmental protection, but these models often overlook the deep-rooted issues of poverty, inequality, and access to resources that many rural communities face. As a result, the literature lacks comprehensive models that address the interconnectedness of economic, social, and environmental sustainability within the context of agribusiness. This gap highlights the need for research that provides an integrated approach to sustainable agricultural systems, one

that combines economic resilience with social equity and environmental conservation(Ballas & Balla, 2024).

This study aims to fill the identified gaps in the literature by analyzing the interconnectedness between agricultural economic resilience, social equity, and environmental conservation within sustainable agribusiness models. The primary objective is to develop a framework for sustainable agribusiness that does not treat these elements as separate but instead recognizes how they are interrelated and mutually reinforcing. Specifically, the research will examine how sustainable agribusiness models can improve the economic resilience of smallholder farmers by reducing their vulnerability to economic shocks and enhancing their ability to adapt to changing market conditions. Additionally, the study will explore how these models can promote social equity by ensuring that the benefits of agribusiness development are more widely distributed, particularly among marginalized groups such as women, Indigenous people, and low-income farmers. The research will also investigate the role of environmental conservation in these models, examining how practices such as agroecology, sustainable land management, and ecosystem restoration can be integrated into farming systems to maintain long-term productivity while protecting natural resources. The goal is to develop a comprehensive framework that provides practical, actionable solutions for policymakers, agribusinesses, and communities to create more inclusive, resilient, and sustainable agricultural systems that balance economic, social, and environmental considerations(Sheergojri et al., 2023).

This research argues that the integration of agricultural economic resilience, social equity, and environmental conservation is essential for creating truly sustainable agribusiness models that can address the challenges of today's agricultural systems. The hypothesis is that by creating agribusiness models that do not solely focus on maximizing profit but also prioritize social and environmental sustainability, it is possible to build a more resilient agricultural sector that benefits not just large corporations, but smallholder farmers as well. Integrating economic resilience into these models ensures that farmers have the tools and resources to cope with economic shocks, while addressing social equity ensures that all members of the community have access to the benefits of agribusiness development. Furthermore, integrating environmental conservation into these models ensures that farming practices do not degrade the natural resources that agriculture depends on, but rather contribute to the restoration and protection of these resources. The study hypothesizes that such an integrated approach can lead to more sustainable, equitable, and resilient agricultural systems, especially in developing countries where the agricultural sector is still the primary source of livelihood for millions of people. This research will demonstrate how combining economic, social, and environmental considerations can transform agribusiness into a force for good, contributing not only to economic development but also to social well-being and environmental sustainability(Kuwar, 2021).

This research is crucial for advancing our understanding of how to create sustainable agricultural systems that are both economically resilient and socially equitable while promoting environmental conservation. Despite the growing recognition of the importance of sustainability in agriculture, there remains a lack of comprehensive models that integrate economic, social, and environmental sustainability in a way that addresses the complex realities faced by smallholder

farmers. By focusing on the interconnectedness of these factors, this study contributes to the development of a more holistic framework for sustainable agribusiness. It is expected that the findings will not only provide insights into the ways in which smallholder farmers can enhance their economic resilience through sustainable practices, but also highlight the importance of including social equity and environmental considerations in the policymaking process. The research will contribute to the growing body of knowledge on sustainable development in agriculture by providing practical, evidence-based recommendations for policymakers, farmers, and agribusinesses. Moreover, it will help to bridge the gap between theory and practice, offering real-world solutions that can be implemented to achieve more sustainable, inclusive, and resilient agricultural systems. Through this study, the aim is to influence both policy and practice, ensuring that future agricultural development models are designed with long-term sustainability in mind(Adesiyan, 2025).

## **METHOD**

### **Research Object**

The object of this research is the exploration of the interconnection between agricultural economic resilience, social equity, and environmental conservation within sustainable agribusiness models. This research specifically focuses on the ways in which these three factors—economic resilience, social equity, and environmental conservation—can be integrated into agribusiness models to create sustainable farming systems. The case study for this research involves examining how sustainable agribusiness practices can address the challenges posed by climate change, market volatility, and social disparities in rural communities, particularly in the context of developing countries. This study analyzes how these models are implemented in practice, the obstacles faced, and the outcomes achieved, with an emphasis on smallholder farmers and marginalized communities. Additionally, this research seeks to identify the most effective strategies for achieving a balance between economic, social, and environmental goals in the agribusiness sector, addressing issues such as income inequality, resource degradation, and the challenges of achieving long-term agricultural productivity(Rachmad, 2024).

### **Research Type and Data Sources**

This research is classified as a library-based study, employing a qualitative research approach through the examination of secondary data. The primary data for this research is gathered from a wide range of relevant literature, which includes books, journal articles, case studies, government reports, and previous scientific research on topics related to agricultural economic resilience, social equity in agribusiness, and environmental conservation in sustainable agriculture. The secondary data sources provide an extensive understanding of the historical and theoretical background of sustainable agribusiness practices, helping to shape the research framework. Literature regarding theoretical concepts such as resilience in agricultural economics, equity in rural development, and sustainable land use practices were reviewed to develop an understanding of the current state of the field. These sources allow the research to assess existing models, identify gaps, and propose integrated approaches for future policy development(Hariram et al., 2023).

## Basic Theoretical Framework

This study is grounded in several foundational theories that inform the analysis of sustainable agribusiness models. The primary theoretical framework used in this research is the Sustainable Livelihoods Framework (SLF), first developed by Chambers and Conway. The SLF emphasizes the importance of people's access to various forms of capital (human, social, natural, physical, and financial) and how these capitals interact to build resilience within communities. In the context of this study, SLF provides a lens through which the economic resilience of agricultural systems can be understood, highlighting the importance of diversified livelihoods, resource management, and community participation. Additionally, Systems Theory (von Bertalanffy) is applied to analyze how various components of agricultural systems (economic, social, and environmental) interact with one another. This theory helps in understanding the complex interdependencies within sustainable agribusiness models, focusing on the need for holistic approaches to policy and practice. These theoretical frameworks guide the analysis of how agricultural resilience, social equity, and environmental conservation can be integrated into one cohesive model that fosters sustainable development in agribusiness (Gai & Yang, 2023).

## Data Collection Process

The research employs documentary analysis as the primary technique for data collection. The data was gathered through the systematic review of literature, including books, journal articles, reports, policy papers, conference proceedings, and other relevant publications. This literature review focuses on sources that address the three key themes of the research: agricultural economic resilience, social equity in agribusiness, and environmental conservation. The documents were selected based on their relevance to the topic, with a particular emphasis on studies that highlight practical examples of sustainable agribusiness models from both developed and developing countries. The process involved identifying key studies that address the integration of economic, social, and environmental factors in agribusiness. These sources were carefully analyzed for their insights into the challenges faced by farmers, the effectiveness of policies and practices, and the impact of sustainability efforts on agricultural communities. The collected data allowed for the identification of trends, patterns, and best practices in sustainable agribusiness models (Olabinjo & Opatola, 2023).

## Data Analysis Technique

For data analysis, this study utilizes content analysis, a qualitative research method that involves examining textual material to identify patterns, themes, and relationships between different concepts. Content analysis was used to systematically process and categorize the data gathered from the literature. This method allows for the extraction of key themes related to the integration of agricultural economic resilience, social equity, and environmental conservation in sustainable agribusiness models. By analyzing the texts, the research identifies recurring patterns, contradictions, and insights that emerge from the literature on sustainable agriculture. The goal is to highlight the relationships between economic, social, and environmental factors and

how they influence the success of sustainable agribusiness practices. The findings are analyzed to identify gaps in existing models, propose improvements, and suggest new directions for future research and policy development. This approach ensures a comprehensive understanding of the ways in which sustainable agribusiness models can be developed to achieve economic, social, and environmental sustainability in the agricultural sector (Dentoni et al., 2021).

## **RESULT AND DISCUSSION**

### **Result**

The research findings underscore the critical role of integrating agricultural economic resilience, social equity, and environmental conservation within sustainable agribusiness models to foster long-term sustainability in agricultural systems. The study revealed that economic resilience is paramount for smallholder farmers, who are particularly vulnerable to economic shocks, climate change, and market volatility. The research found that adopting risk management strategies such as crop diversification, climate-smart agriculture (CSA), and financial mechanisms like crop insurance can significantly enhance the ability of farmers to withstand economic challenges. These strategies help ensure that farmers maintain stable incomes even in the face of market disruptions or unpredictable weather patterns, allowing them to better cope with adverse conditions. By promoting long-term economic stability, these practices not only protect farmers' livelihoods but also contribute to the overall resilience of the agricultural sector. The findings highlighted that the adoption of sustainable farming techniques such as agroforestry, which integrates trees into agricultural systems, significantly reduces the risk of economic losses by diversifying income sources and enhancing the ecological stability of farming areas.

The research also emphasized the importance of social equity in agribusiness models. The study demonstrated that when agricultural policies and practices ensure equitable access to resources, such as land, credit, training, and markets, marginalized groups—particularly women, indigenous communities, and rural populations—benefit directly, contributing to greater economic equality. A key finding from the study is that agribusiness models that integrate social equity not only enhance individual farmer productivity but also promote stronger social cohesion and resilience at the community level. In several case studies examined, women who were granted equal access to resources and training in sustainable agricultural practices were able to improve both their farming yields and income generation, resulting in higher levels of family and community welfare. Social equity, when effectively integrated into agribusiness policies, was found to break down historical inequalities and contribute to more inclusive economic growth. The research further illustrated that empowering women and marginalized groups enables them to actively participate in value chains, ultimately benefiting the entire agricultural economy. This shows that inclusivity is not only a matter of fairness but also crucial to achieving more sustainable and resilient agricultural systems.

On the environmental side, the research confirmed that environmental conservation practices are essential for the long-term sustainability of agricultural systems. The findings pointed to the successful application of agroecological practices, organic farming, and sustainable land management as methods that improve soil fertility, enhance biodiversity, and reduce the negative impacts of agricultural activities on the environment. For instance, farmers who adopted agroecology were able to

increase crop yields while also restoring and conserving soil health, which is critical for maintaining long-term agricultural productivity. The research showed that sustainable farming techniques, which avoid the overuse of chemical fertilizers and pesticides, not only protect the environment but also reduce farming costs, making these practices more economically viable in the long run. Additionally, agroforestry and soil conservation techniques have proven to increase water retention and reduce erosion, helping farmers adapt to the increasing challenges posed by climate change. These environmentally sustainable practices have been particularly effective in maintaining the balance between agricultural productivity and ecosystem health, ensuring that the environment can continue to support farming activities without compromising future generations' ability to farm.

The study further emphasized that economic resilience, social equity, and environmental conservation are deeply interconnected and must be integrated into a cohesive framework for sustainable agribusiness. The research revealed that economic resilience can be significantly enhanced when sustainable farming practices are applied, as they help ensure long-term productivity and minimize the risks associated with market fluctuations and environmental degradation. For instance, farms that embraced sustainable farming techniques, such as integrated pest management and crop rotation, were not only more resilient to environmental shocks like droughts and floods but also able to produce higher-quality crops that fetched better prices in local and international markets. The research found that social equity contributes to economic resilience by providing marginalized groups with the resources and training necessary to improve their agricultural productivity. When smallholder farmers, particularly women and indigenous groups, have access to the tools and knowledge needed to enhance their farming practices, they are better able to contribute to the resilience of the agricultural sector as a whole. The study further highlighted that environmental conservation is a key driver of both economic resilience and social equity, as healthy ecosystems support the agricultural system's long-term viability and provide opportunities for all farmers to participate in sustainable practices.

However, the research also identified several barriers and challenges to the successful integration of these three elements into agribusiness models. One of the major challenges is the lack of resources at the local level, especially among smallholder farmers. Many farmers, particularly in developing countries, face financial constraints that prevent them from investing in the necessary tools, technology, and training to implement sustainable practices. The research showed that limited access to credit, coupled with insufficient government support and inadequate infrastructure, is a significant barrier to adopting sustainable farming practices. Furthermore, the research found that policy frameworks in many developing countries are often disconnected from the needs of smallholder farmers. Many national agricultural policies prioritize large-scale commercial agriculture and fail to address the specific needs of smallholder farmers, who are critical to food security in rural areas. This policy gap, combined with a lack of awareness among policymakers about the potential of sustainable agribusiness models to achieve social and environmental goals, hampers the effectiveness of agribusiness policies.

Additionally, lack of education and awareness regarding sustainable agricultural practices remains a key obstacle to their widespread adoption. The research revealed that many farmers are unaware of the benefits of practices such as crop diversification, agroecology, and sustainable land management, which could increase their productivity while reducing environmental harm. Moreover, climate change continues

to pose significant challenges to the adoption of sustainable practices, as unpredictable weather patterns and extreme events like droughts and floods disrupt traditional farming cycles. The study found that more investment in education and capacity-building for farmers is essential for overcoming these challenges. Local governments, NGOs, and the private sector must collaborate to provide farmers with the knowledge, resources, and tools they need to adopt and benefit from sustainable farming practices. This requires a multifaceted approach, including the development of accessible financial mechanisms, policies that support smallholder farmers, and public awareness campaigns that highlight the long-term benefits of sustainability in agribusiness.

The research highlights the essential role of integrating economic resilience, social equity, and environmental conservation in creating sustainable agribusiness models. The study demonstrates that these elements are not only interconnected but also mutually reinforcing, with each contributing to the others' success. Economic resilience is enhanced when social equity and environmental conservation are prioritized, creating a more robust and adaptable agricultural system. Similarly, fostering social equity strengthens the resilience of the agricultural sector, as it ensures that all stakeholders, including marginalized groups, have access to the resources and opportunities they need to succeed. By integrating these three pillars, agribusiness models can become more inclusive, sustainable, and resilient, ultimately leading to improved outcomes for farmers, communities, and the environment. However, the successful implementation of these models requires overcoming significant barriers, including resource constraints, policy gaps, and a lack of education and awareness. Addressing these challenges will require concerted efforts from all sectors of society—government, the private sector, and civil society—working together to create the conditions necessary for sustainable agricultural development.

## **Discussion**

### **Economic Resilience in Sustainable Agribusiness Models**

Economic resilience is one of the cornerstones of sustainable agribusiness, and this research underscores its importance in ensuring the long-term stability of agricultural systems. The study reveals that smallholder farmers who adopt diversified livelihoods are more resilient to economic shocks, such as fluctuations in commodity prices and extreme weather events. Diversification, including the cultivation of multiple crops, livestock integration, and the use of agroforestry systems, enables farmers to reduce their dependence on single crops and market fluctuations. Moreover, the research highlights that access to microcredit and insurance schemes is crucial for enhancing economic resilience. These financial tools allow farmers to mitigate risks, invest in new technologies, and withstand economic shocks. However, the findings also show that there are barriers to access, especially for smallholders in developing countries, where financial services are often limited or inaccessible. Therefore, improving access to financial resources and ensuring that economic resilience strategies are tailored to the local context are essential to their success.

The integration of climate-smart agriculture (CSA) practices is another important strategy to enhance economic resilience. The research found that CSA practices, which include water management, soil conservation, and climate-responsive crop choices,

significantly improve the ability of farmers to cope with the unpredictable nature of climate change. By integrating CSA practices, farmers not only improve their economic resilience but also contribute to the broader goal of environmental conservation. For instance, water-efficient irrigation systems and crop rotation techniques help reduce the vulnerability of crops to droughts and floods. CSA practices, therefore, provide a double benefit—strengthening the economic position of farmers while promoting environmental sustainability. However, the adoption of these practices requires both government support and market incentives, which are often lacking in areas with limited access to resources.

Another important aspect of economic resilience is market access. The research found that farmers who have access to local and international markets are better equipped to withstand economic fluctuations. Market access provides farmers with the opportunity to diversify income streams and reduce their vulnerability to price shocks. However, the findings also highlight that smallholder farmers, especially in rural and remote areas, often face significant challenges in accessing markets due to infrastructure limitations, lack of transport, and inadequate supply chains. The government, NGOs, and private enterprises need to collaborate to improve market infrastructure and create more inclusive market access strategies for smallholder farmers. Building and strengthening local markets and facilitating farmers' participation in regional and international markets are essential components of improving economic resilience in agribusiness.

Furthermore, policy interventions play a critical role in supporting the economic resilience of smallholder farmers. The study emphasizes the importance of policies that incentivize sustainable farming practices and protect farmers from economic shocks. For example, subsidies for sustainable technologies, insurance schemes, and access to affordable credit can provide farmers with the tools they need to build resilience. Additionally, the integration of resilience-building policies into national agricultural strategies ensures that economic stability is not only achieved on the farm level but is supported by broader national frameworks. This research highlights the need for policies that are flexible, adaptive, and responsive to the diverse needs of farmers, particularly those in marginalized areas who face the greatest risks.

The research also uncovered that knowledge dissemination plays a crucial role in enhancing economic resilience. Smallholder farmers often lack the necessary skills and knowledge to implement strategies that improve economic stability, such as financial management, crop diversification, and market navigation. Training programs that focus on these areas are essential to improving the economic resilience of farmers. NGOs and local agricultural extension services have a significant role to play in delivering these programs. The findings suggest that effective knowledge transfer is key to empowering farmers to adopt sustainable practices and make informed decisions. The research points out that while training programs are available, their scope and reach remain limited, highlighting the need for a more comprehensive and widespread effort to disseminate knowledge about economic resilience strategies.

Additionally, the study found that social networks and cooperatives can serve as valuable tools for building economic resilience. By forming cooperatives, farmers can collectively access markets, share resources, and reduce the risks associated with individual farming efforts. Cooperatives enable farmers to pool their resources,

negotiate better prices, and share information about sustainable practices. The research also highlights that cooperatives can play a significant role in advocacy, helping farmers lobby for policies that support their economic resilience. However, the success of cooperatives depends on the level of trust and collaboration among members, and the study found that in some regions, the lack of cohesion within cooperatives has hindered their potential to enhance economic resilience.

Finally, the research points out that technology adoption is a critical factor in economic resilience. The use of technology, such as mobile applications for market information, precision agriculture tools, and climate forecasting, allows farmers to make better-informed decisions and improve their productivity. The study found that while technology has the potential to enhance resilience, it is often underutilized by smallholder farmers due to high costs, lack of awareness, and limited technological infrastructure. Bridging the digital divide and increasing the availability of affordable technology could further boost the economic resilience of farmers, particularly those in remote or underdeveloped areas. Technology, when effectively integrated into agribusiness models, can significantly reduce costs, increase efficiency, and improve market access, all of which contribute to greater economic resilience.

Table 1. Strategies for Enhancing Economic Resilience in Sustainable Agribusiness among Smallholder Farmers

Strategy	Key Benefits	Challenges/Barriers	Recommendations
Diversified Livelihoods	Reduces dependence on single crops; buffers against price shocks and weather	Limited adoption among smallholders	Promote multi-crop, livestock, and agroforestry systems
Microcredit & Insurance	Mitigates risks; enables tech investments and shock recovery	Inaccessibility in developing countries	Improve financial access tailored to local contexts
Climate-Smart Agriculture (CSA)	Enhances coping with climate variability; supports environmental sustainability	Lack of government support and market incentives	Provide subsidies and incentives for water/soil practices
Market Access	Diversifies income; reduces price vulnerability	Poor infrastructure, transport, and supply chains	Collaborate on infrastructure; build local/regional markets
Policy Interventions	Incentivizes sustainable practices; provides safety nets	Policies not adaptive to marginalized farmers	Integrate flexible subsidies, insurance into national strategies

Knowledge Dissemination	Builds skills in financial management, diversification, and markets	Limited scope and reach of training programs	Expand NGO/extension services for comprehensive programs
Social Networks & Cooperatives	Pools resources; improves bargaining, advocacy, and risk-sharing	Lack of trust and cohesion among members	Foster trust-building for effective farmer groups
Technology Adoption	Improves decisions via apps, precision tools, forecasting; boosts efficiency	High costs, low awareness, digital divide	Bridge digital gaps with affordable, accessible tech

### Social Equity in Agribusiness Models

Social equity plays a critical role in the success of sustainable agribusiness models, as it ensures that all members of society, particularly marginalized groups, have access to the benefits and opportunities provided by the agricultural sector. The research highlighted that agribusiness models that promote social inclusion by ensuring equal access to resources, land, and capital for women, indigenous people, and other marginalized communities contribute to the overall sustainability and resilience of the agricultural system. This study found that policies promoting gender equity, for example, significantly improved farm productivity and household income when women were given equal access to agricultural inputs and training. The inclusion of women in decision-making processes related to farming practices and resource management also resulted in more diversified income sources and greater community cohesion.

One of the key findings of the research is that equitable land access is essential for promoting social equity in agribusiness. In many developing countries, access to land is often concentrated in the hands of a few, leaving smallholder farmers, particularly women, without secure land tenure. This disparity prevents marginalized groups from benefiting from agribusiness opportunities and limits their ability to improve their livelihoods. The study emphasizes that secure land tenure is a foundational element of social equity, as it allows farmers to invest in land improvements, implement sustainable practices, and pass on assets to future generations. Policies that ensure land access for marginalized groups are critical in fostering inclusive agricultural development. Moreover, land reform initiatives that address historical inequities in land distribution can empower rural communities and create a more equitable agribusiness environment.

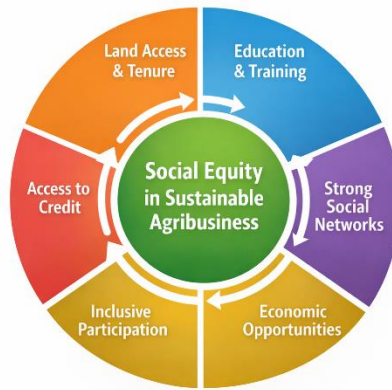
The research also found that education and training are key to promoting social equity within the agribusiness sector. Providing farmers with access to education and technical training helps them to improve their agricultural practices and increase productivity, which ultimately raises household income and strengthens their position in the agricultural economy. The study highlighted several case studies where farmers who

received training in sustainable farming practices, business management, and financial literacy were able to overcome social barriers and achieve greater economic success. However, the research also found that many marginalized communities still lack access to these essential training programs, which limits their ability to fully participate in the agricultural economy. To address this, the study suggests that targeted education programs, particularly for women and minority groups, should be implemented to promote social equity.

Additionally, equal access to credit was identified as a crucial factor in promoting social equity in agribusiness. The research demonstrated that smallholder farmers, especially those from marginalized communities, often face challenges in accessing credit due to high-interest rates, lack of collateral, and limited financial literacy. The findings emphasized that improving access to affordable credit can enable farmers to invest in sustainable technologies, diversify their crops, and improve their productivity. The study found that microfinance institutions and cooperatives could play a vital role in facilitating access to credit for smallholder farmers, particularly women and indigenous communities who are often excluded from traditional banking systems. Providing farmers with access to financial resources allows them to take advantage of economic opportunities and enhances their ability to implement sustainable practices.

The research also examined the role of social capital in promoting social equity within agribusiness models. It found that strong social networks, including community-based organizations, cooperatives, and farmer groups, contribute to the successful implementation of sustainable practices. By fostering collaboration and sharing knowledge, these networks enable farmers to access resources, gain new skills, and collectively address challenges. Social capital also enhances the ability of communities to advocate for policy changes that benefit marginalized groups. The study highlighted that the more inclusive and participatory the decision-making process, the more likely it is to result in equitable and sustainable outcomes. However, the research pointed out that social exclusion remains a significant barrier in many agricultural communities, and efforts should be made to ensure that all voices are heard in decision-making processes related to agribusiness.

Finally, the research found that inclusive business models that prioritize social equity tend to be more successful in the long term. By focusing on inclusivity and ensuring that all stakeholders—particularly marginalized groups—have a stake in the success of the agribusiness, the models become more sustainable. The study suggests that agribusinesses that integrate social equity into their core operations not only improve the livelihoods of marginalized communities but also enhance their own resilience by building stronger, more cohesive communities. Inclusive business models contribute to the broader goal of poverty reduction, helping to address the root causes of social inequality in agricultural systems.



Image, the relationship between Social Equity and key factors in sustainable agribusiness models

The diagram represents the relationship between Social Equity and key factors in sustainable agribusiness models, focusing on how inclusivity and equitable access to resources enhance the sustainability and resilience of agricultural systems. The diagram follows a circular structure, with arrows indicating the interconnection and flow of ideas.

At the center of the diagram, Social Equity is highlighted as the key component that drives sustainable agribusiness models. The surrounding elements—Education and Training, Equal Access to Credit, Social Capital, Inclusive Business Models, and Land Access—are linked directly to social equity and emphasize its importance in achieving sustainable agricultural outcomes.

- **Land Access:** This factor is crucial in ensuring that marginalized communities, particularly women and indigenous people, have secure land tenure. Access to land allows farmers to invest in improvements and implement sustainable agricultural practices, ultimately contributing to long-term productivity and poverty reduction.
- **Education and Training:** Equitable access to education and technical training enables farmers, especially women and marginalized groups, to improve their agricultural practices and increase their productivity. This access helps overcome social barriers and enhances the participation of these groups in the agricultural economy.
- **Equal Access to Credit:** This component addresses the financial challenges faced by smallholder farmers, particularly those in marginalized communities. Access to affordable credit allows farmers to invest in sustainable technologies, diversify crops, and improve productivity, thereby increasing their economic stability and resilience.
- **Social Capital:** Social networks, such as community-based organizations and cooperatives, enable farmers to collaborate, share knowledge, and address challenges collectively. These networks play a key role in promoting social equity by fostering inclusivity and empowering farmers to advocate for policies that support their needs.

- **Inclusive Business Models:** Agribusinesses that prioritize inclusivity and social equity are more likely to be sustainable. The diagram suggests that these models not only improve the livelihoods of marginalized groups but also enhance the resilience of the agricultural sector by building stronger, more cohesive communities.

## CONCLUSION

This research emphasizes the critical interconnection between agricultural economic resilience, social equity, and environmental conservation in creating sustainable agribusiness models. It demonstrates that integrating these three pillars is essential for fostering long-term sustainability in agriculture, particularly for smallholder farmers and marginalized communities. The study highlights the importance of enhancing economic resilience through diversified livelihoods and climate-smart agriculture, promoting social equity by ensuring inclusive access to resources and opportunities, and implementing environmentally sustainable practices to preserve ecosystems. The findings further underscore the need for integrated policies that address these interconnected factors simultaneously, ensuring that agricultural systems are not only productive and economically viable but also socially inclusive and environmentally responsible. The research ultimately provides valuable insights for policymakers, agribusinesses, and communities to develop holistic and resilient agribusiness models that can thrive in the face of economic, social, and environmental challenges.

## Bibliography

- Adesiyan, T. (2025). Leveraging Agricultural Credit and Digital Finance for Enhancing Smallholder Productivity and Rural Economic Growth. *International Journal of Advance Research Publication and Reviews*, 2(08), 642–667.
- Ballas, P., & Balla, V.-M. (2024). Enhancing Social and Economic Resilience for a Changing World: The Strategic Role of Continuous Training and Capacity Building in Contemporary Tax and Customs Administrations. In *The Role of the Public Sector in Building Social and Economic Resilience: A Public Finance Approach* (pp. 157–179). Springer.
- Dentoni, D., Pinkse, J., & Lubberink, R. (2021). Linking sustainable business models to socio-ecological resilience through cross-sector partnerships: A complex adaptive systems view. *Business & Society*, 60(5), 1216–1252.
- Gai, M., & Yang, Q. (2023). Synergistic study of the green efficiency and economic resilience of agriculture from a sustainable development perspective: evidence from Northeast China. *Environmental Science and Pollution Research*, 30(31), 77568–77592.
- Hariram, N. P., Mekha, K. B., Suganthan, V., & Sudhakar, K. (2023). Sustainalism: An integrated socio-economic-environmental model to address sustainable development and sustainability. *Sustainability*, 15(13), 10682.
- Kusumawati, R., Agustian, M. F. Y., & Rosyalita, D. (2025). EXPLORING THE ECONOMIC LINK BETWEEN FINANCIAL RISK STRATEGIES AND LONG-TERM SUSTAINABILITY IN THE BANKING INDUSTRY. *SIBATIK JOURNAL: Jurnal Ilmiah Bidang Sosial, Ekonomi, Budaya, Teknologi, Dan Pendidikan*, 4(10), 3169–3178.
- Kuwar, P. R. (2021). Impact of Education on Economy. *Triyuga Academic Journal*.

<https://doi.org/10.3126/taj.v2i1.45620>

- Olabinjo, O., & Opatola, S. (2023). Agriculture: A pathway to create a sustainable economy. *Turkish Journal of Agricultural Engineering Research*, 4(2), 317–326.
- Rachmad, Y. E. (2024). Danantara and National Economic Resilience: Strengthening Indonesia's Financial Stability. *The United Nations Global Compact*.
- Sheergojri, I. A., Rashid, I., Aneaus, S., Rashid, I., Qureshi, A. A., & Rehman, I. ul. (2023). local communities in management practices, it is possible to enhance both ecological resilience and socio-economic well-being. *Environment, Development and Sustainability*, 1–26.